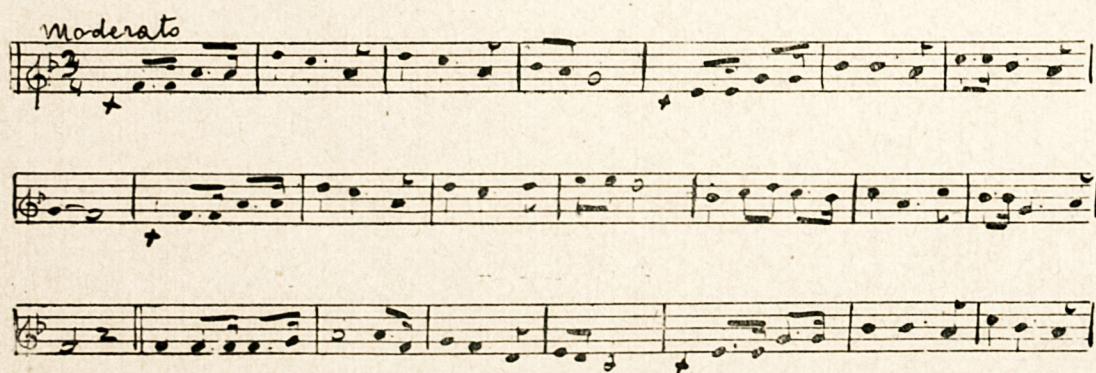


# La Montanara

---

Là su per le montagne  
fra boschi e valli d'or  
tra l'aspre rupi eccheggia  
un cantico d'amor....



“ La montanara, ohè!....,,

si sente cantare

“ Cantian la montanara,

e chi non la sa....,,

Là su sui monti

dai rivi d'argento

una capanna cosparsa di fior....

era la piccola dolce dimora

di Soreghina, la figlia del Sol!....

la figlia del Sol!

Handwritten musical score for the song 'La montanara'. The score consists of three staves of music. The first staff is the vocal line, starting with a treble clef and a key signature of one flat (B-flat). The second staff is the piano accompaniment, starting with a treble clef and a key signature of one flat. The tempo marking 'Largo espressivo' is written above the second staff. The music is written in a simple, folk-like style with clear note heads and stems.